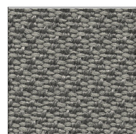


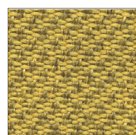
1006



2519



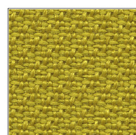
1506



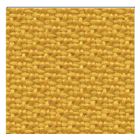
3509



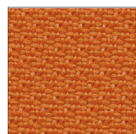
2007



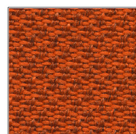
3030



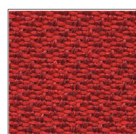
3008



4030



4566



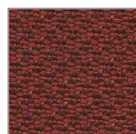
4528



4522



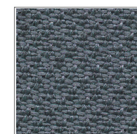
4037



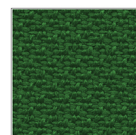
4503



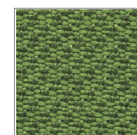
8033



8517



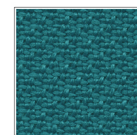
7029



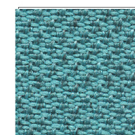
7521



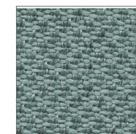
7525



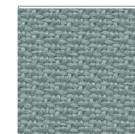
7033



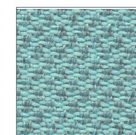
7504



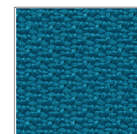
8532



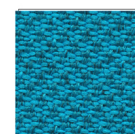
8032



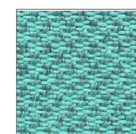
7530



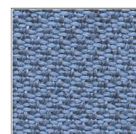
6075



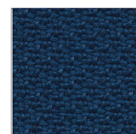
6591



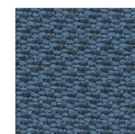
6546



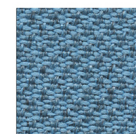
5592



6080



6512



6524



Specification

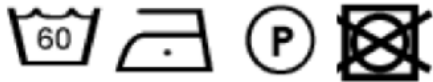
SPECIFICATION	STANDARD	TOLERANCE	ACHEIVED
COMPOSITION	100% RECYCLED POLYESTER - SEAQUAL CERTIFIED		
ENVIRONMENTAL	OEKO-TEX Standard 100 Global Recycling Standard Upcycled Marine Plastic		
ABRASION	ISO 12947-2 (Martindale)	± 10%	100,000
WIDTH (cm)	—	± 2%	140
WEIGHT (g/lm)	EN 12127	± 5%	460
PILLING (2000 rubs)	ISO 12945-2	from 4 to 5	5
LIGHT FASTNESS (blue scale)	ISO 105-B02 (Xoenotest)	from 5 to 8	6
FASTNESS TO RUBBING	ISO 105-X12 (Crockmeter)	from 4 to 5	4/5 (grey scale)

Slight colour variation within commercial tolerance may occur between batches due to properties of textiles

Digital fabric image may not be colour accurate. Always request fabric sample before ordering

FLAMMABILITY	
UNI 9175 Class 1 IM EN 1021-1&2 Cigarette & Match BS 7176 Low Hazard California TB117	Flame retardant performance is dependent upon the foam used

CLEANING AND WASHING





inloom
fabrics